

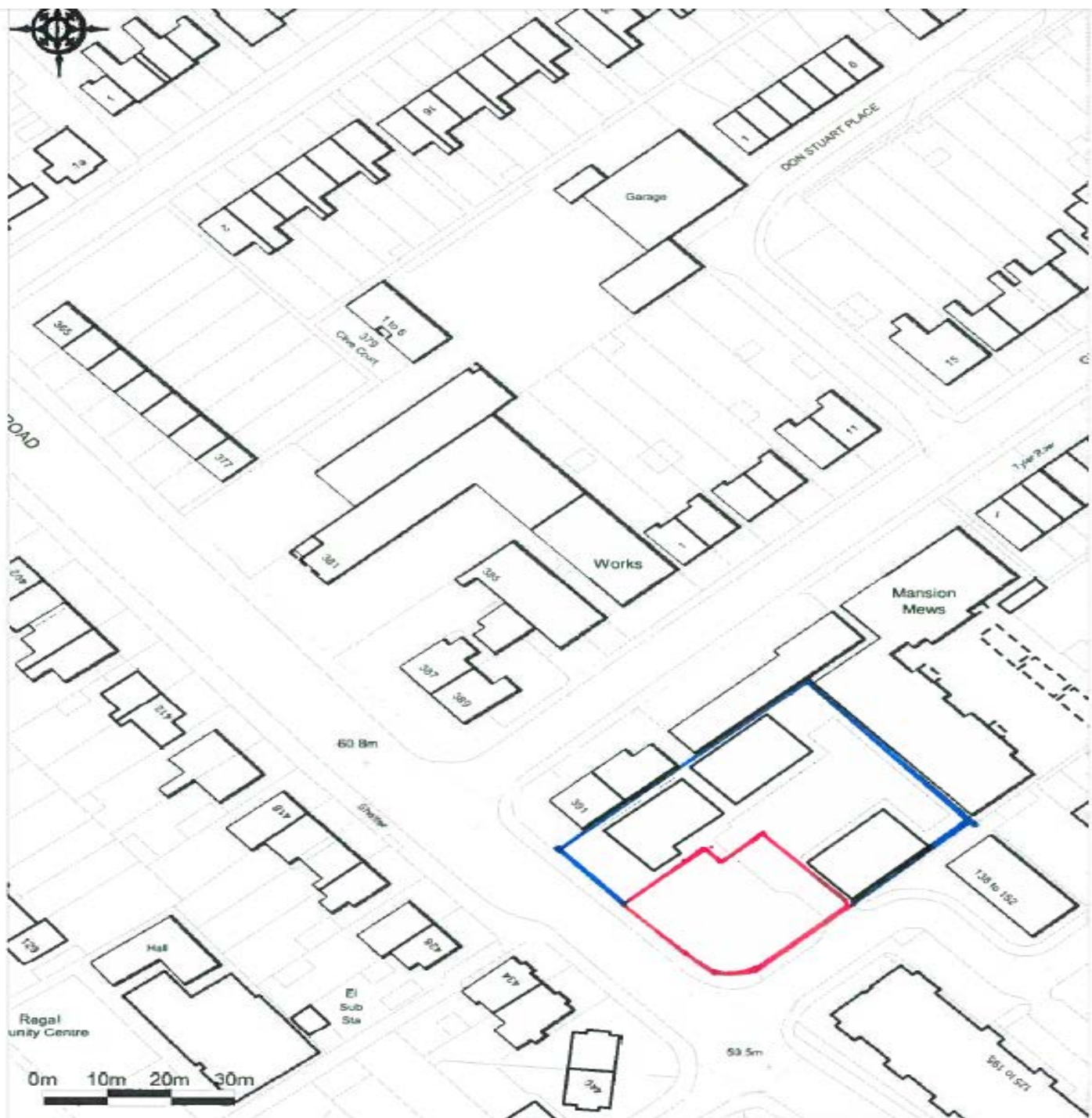
Welcome to the East Area Planning Committee

- This planning committee meeting is held in public but it is not a public meeting.
- There will be an opportunity for the public to address the committee on each application.
- If you wish to speak for or against a planning application, you need to have either requested it in advance, or hand in one of the available speaker forms, or speak to the clerk.
- Information on meeting protocol and conduct at the committee is set out in the Code of Practice.
- This is in the committee agenda just before the first planning application report.



Site Location Plan

34





View of the corner site from the Cowley Road, behind the hoarding.



Canterbury House adjacent (No.393 Cowley Road)

Office Block



37



View up Reliance Way, site access on LHS, before Office block . RHS of picture shows Flats on remainder of the former Bus Depot.



View up the Cowley Road showing the flats on the corner of Reliance Way



39

Inside the site



40

Inside the site



Inside the site

Inside the site



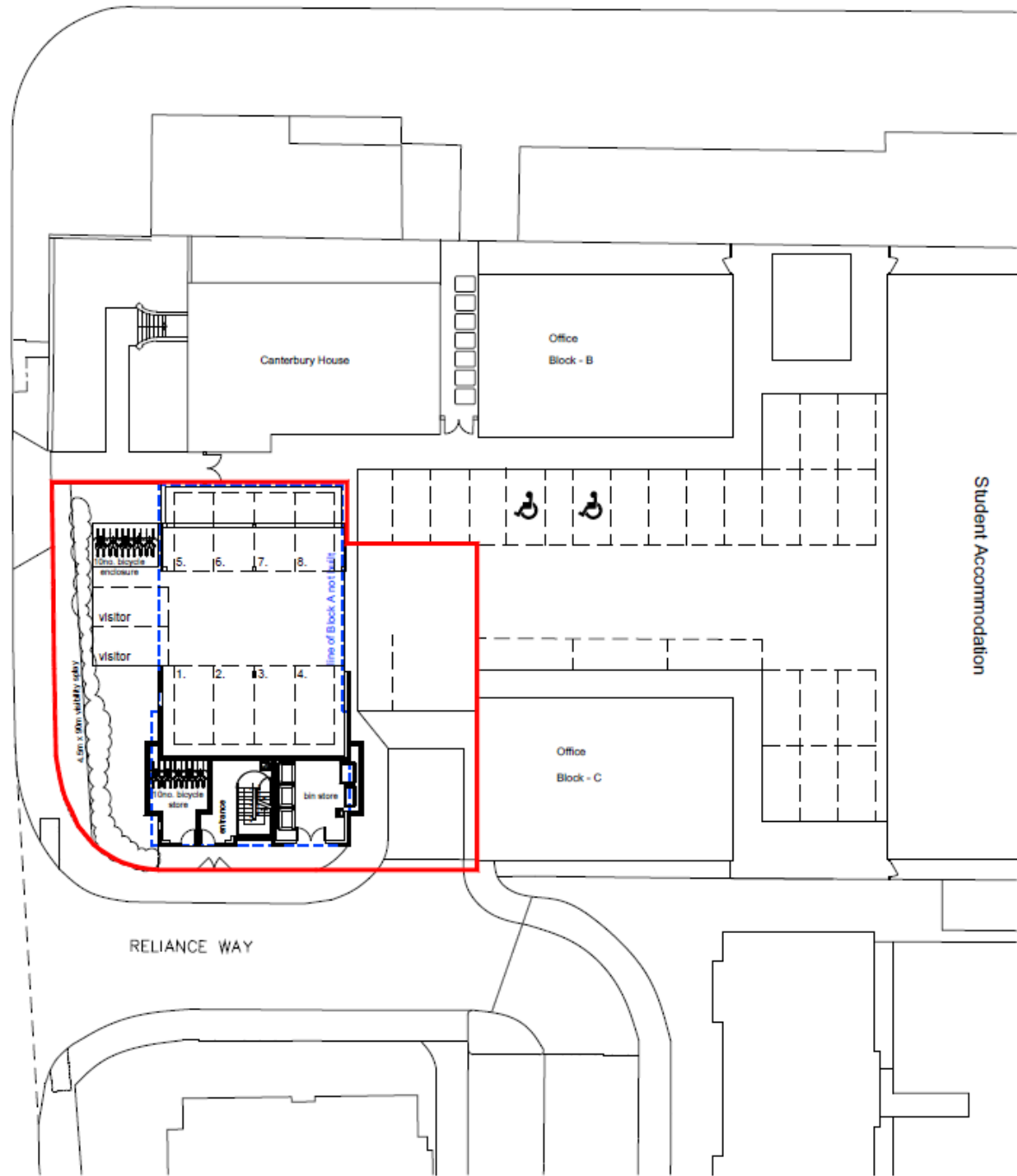
42

Inside one of the office buildngs

Block Plan and Ground Floor

GLANVILLE ROAD

COWLEY ROAD



BLOCK PLAN AND GROUND FLOOR (1:200)

Elevations

44



INDICATIVE ELEVATION TO COWLEY ROAD (1:200)



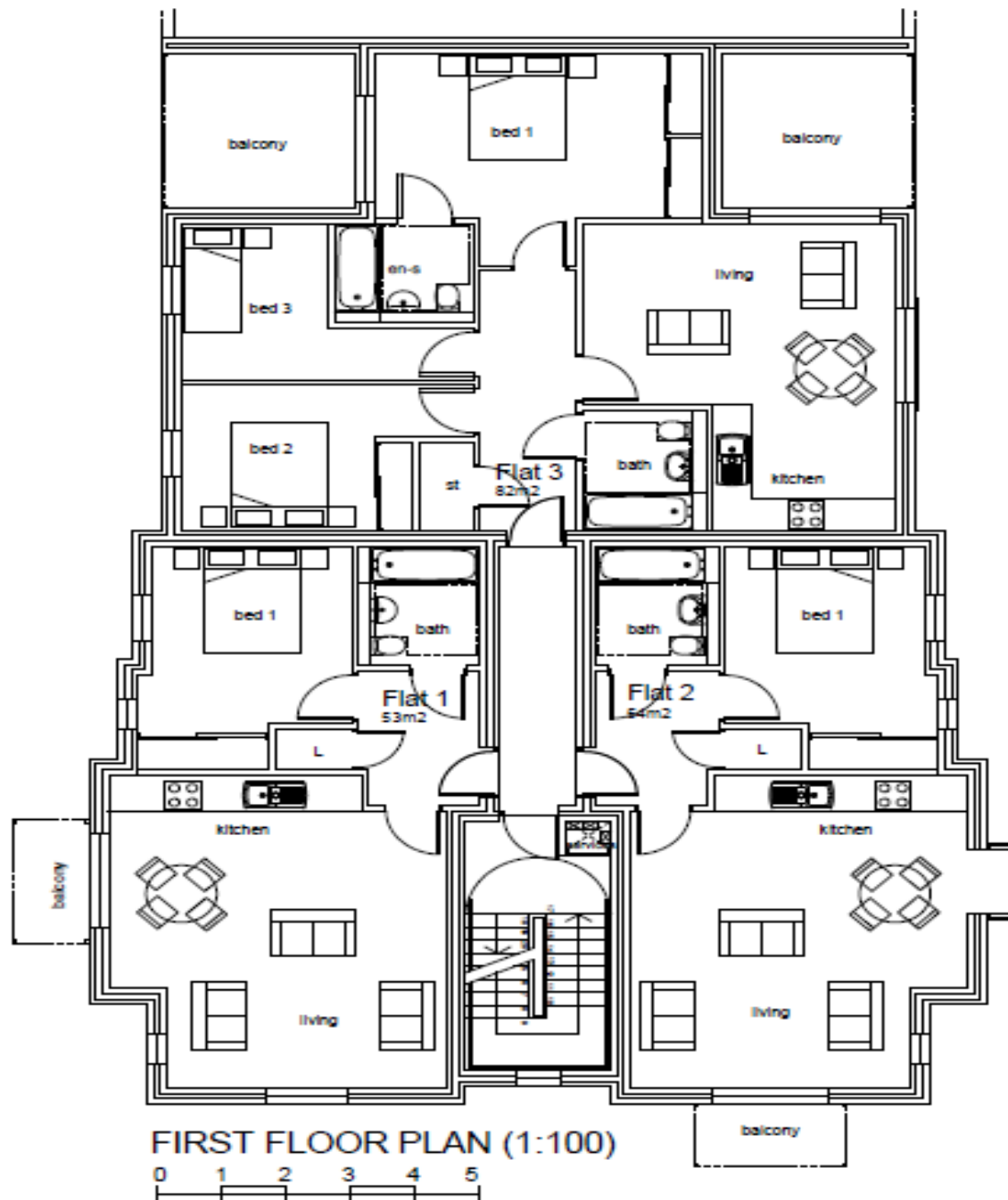
INDICATIVE ELEVATION TO RELIANCE WAY (1:200)



INDICATIVE ELEVATION TO EXISTING OFFICES CAR PARK (1:200)

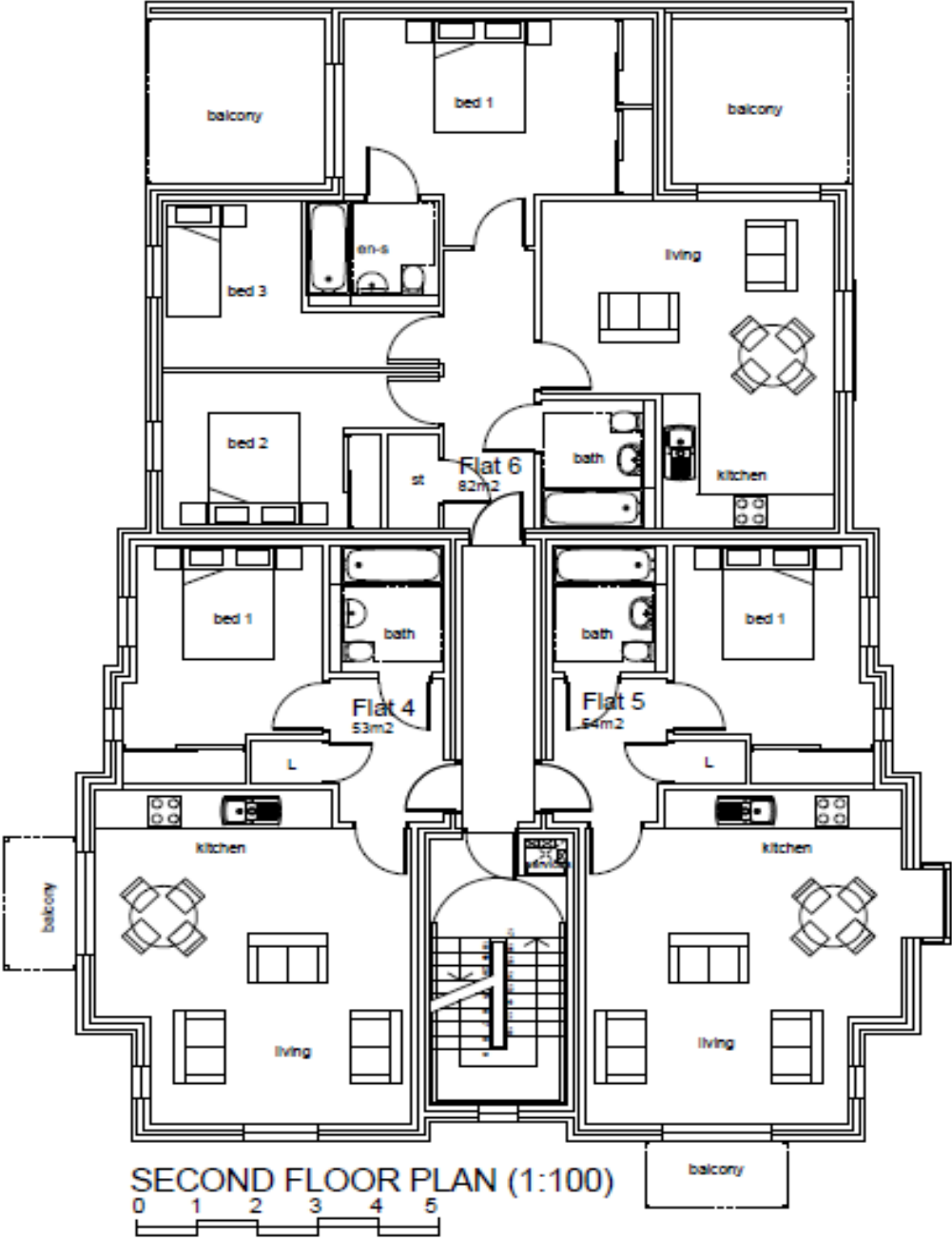
First Floor Plan

45



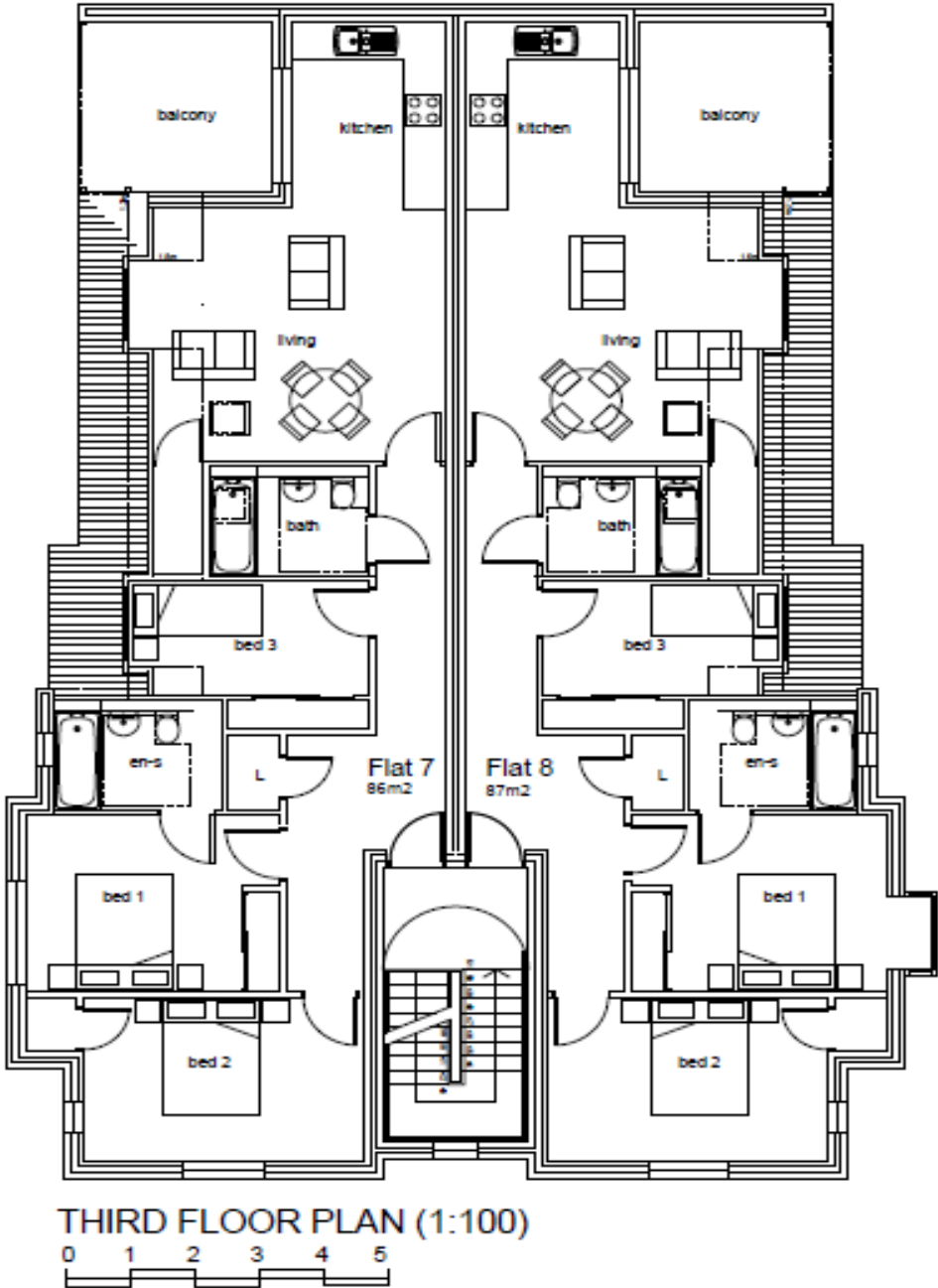
Second
Floor Plan

46



Third Floor
Plan

47



This page is intentionally left blank